

# HONGKONG MARIDA INDUSTRY CO., LIMITED

**Brief introduction for PVC Click Vinyl tile installation**



# HONGKONG MARIDA INDUSTRY CO., LIMITED

## Subfloor check and handle

### 1. subfloor clearance

Keep the subfloor clean: no dung, no pollutants, keep dry, no dust .

### 2. subfloor strength and moisture content

subfloor strength can not under the standard of concrete strength - 20 C, no loose or fragile area. Hardness at subfloor is not lower than 1.2 mpa score (using the Sclerometer to test ). At subfloor moisture content < 2.5%(if necessary, could be installed in small area in the situation of R/H 95% and without water)

sclerometer



hygrometer



# HONGKONG MARIDA INDUSTRY CO., LIMITED

## Subfloor check and handle

### 3. Subfloor flatness:

Using 2 m surface flatness detection rule, the unflatness within 2 meters diameter range should be less than 2 mm, and no crack aperture and the structure defects.. Subfloor flatness is very crucial because it will directly affect the overall effect of the use after installation .



# HONGKONG MARIDA INDUSTRY CO., LIMITED

## preparatory work before installation

1. After clean sub-floor ,PVC floor put on room more than 48 hours before installation
2. Tools for installation: Pencil, Cutter,ruller, meter ruler
3. Wedge for expansion joint



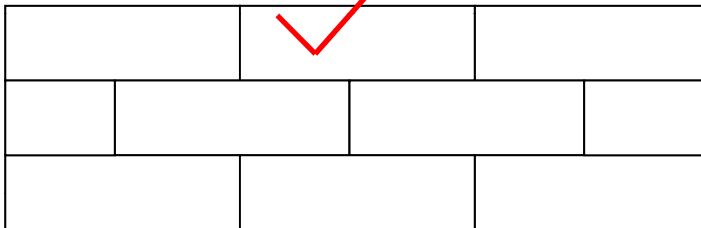
# HONGKONG MARIDA INDUSTRY CO., LIMITED

## Installation Requirement

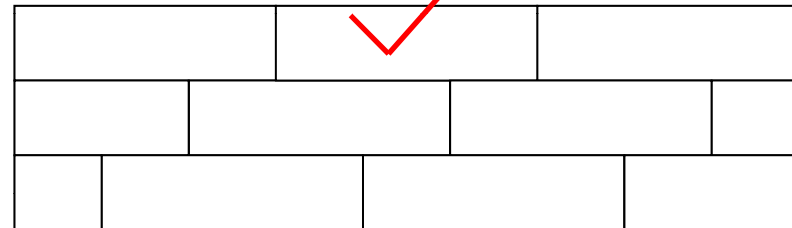
1.Start installation from appoint wall edge, First floor fix on the wall edge and second floor short edge(Tenon) inset into first floor short edge(Groove). Same installation method until to the corner. Use ruler and cutter if need cut. The rest installation need start form second row. Same installation method until finished.

2.PVC floor installation method is different from other floor installation. So PVC floor installation use signal row expand to end. Not recommend to use central point to the all around method. Use “half method” or “three six nine method”

half method



three six nine method

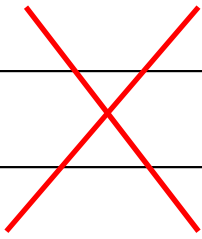


# HONGKONG MARIDA INDUSTRY CO., LIMITED

## Installation Requirement

3 Installation to second row. The short edge need mismatch with first row' short edge. NO two row vertical installation becoming one line.  
Not recommend one line Installation method. one line method can not lock floor totally and easy to loose. Check below pictures

“one line method”

# HONGKONG MARIDA INDUSTRY CO., LIMITED

## Installation Requirement

4. Correct click installation is: Let tenon inset into groove, the contrary is not allowed .



Correct installation



# HONGKONG MARIDA INDUSTRY CO., LIMITED

## Installation Requirement

5. Shrinkage gap : If the length is 10M or more than 10M .the gap should be left ,the parameter for shrinkage gap is 8mm~10mm .

6. Installation temperature : **20°C--25°C**



# HONGKONG MARIDA INDUSTRY CO., LIMITED

## Installation Requirement

7. Reading construction manual or contact with the local vendors (or producer) when you install the PVC click flooring. Installation should be finished by professional. It is easy to install after you understand the correct installation method. Using the Wood or iron hammer to beat the click type is not allowed, the click type will be broken and lead to Installation anomaly.

correct method



wrong method



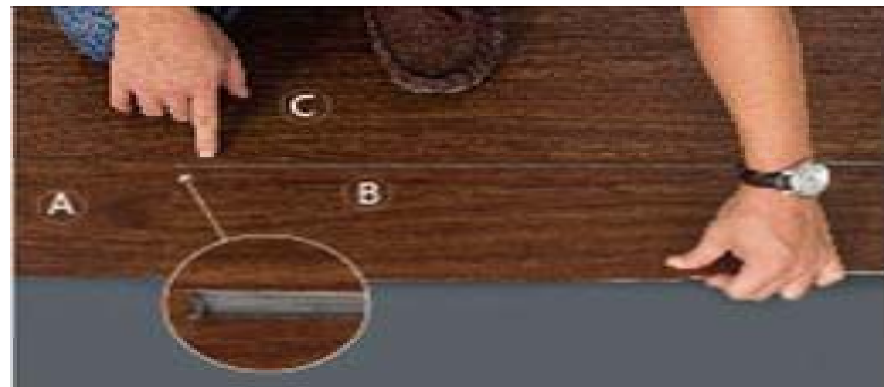
# HONGKONG MARIDA INDUSTRY CO., LIMITED

## click-type installation steps

Step one: The B board tenon inclined plate inset in A board groove .Flat the floor after locking



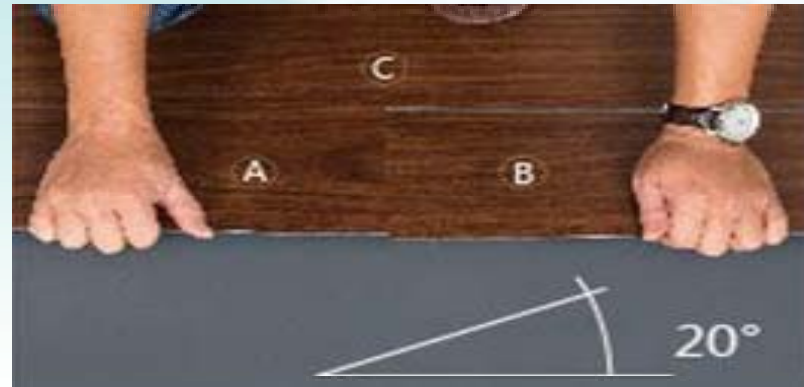
Step two: After Flat B board and C board then make a space of 2-3mm into parallel lines.



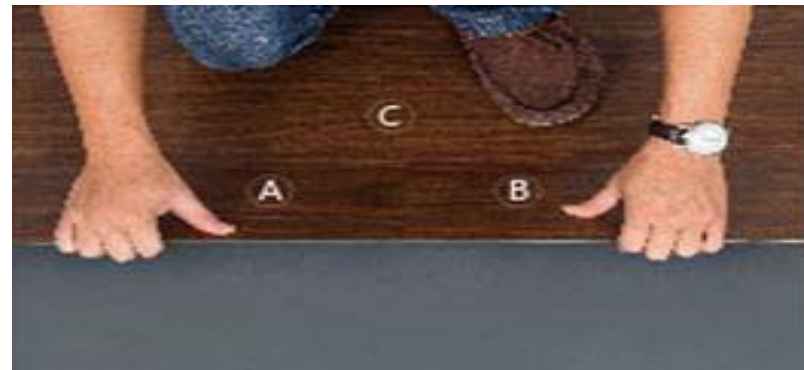
# HONGKONG MARIDA INDUSTRY CO., LIMITED

## click-type installation steps

Step three: Lift A board and B board.(depending on the thickness of the floor,make an 20-45 degree angle with the ground.



Step four: Push the B board towards to C boards until locking.



# HONGKONG MARIDA INDUSTRY CO., LIMITED

## click-type installation steps

Step five: Press the A board and B board to make them flat. Don't force to press the floor. Where there is a gap or a tilt, the click do not lock together.



# HONGKONG MARIDA INDUSTRY CO., LIMITED

## Anta edge fix and cut

When felting to corner,using the ruler cut the required size,the rest of the floor install on the first row of the first position.that can reduce cutting waste.

corner dimensional measurement



corner trim



cut remaining floor spread bottomup



# HONGKONG MARIDA INDUSTRY CO., LIMITED

## corner cutting

When felting to corner or column, use floor or ruler comparison corner or column measurement the size and cutting after use a pen mark.

corner measuring



corner cutting



corner felting



# HONGKONG MARIDA INDUSTRY CO., LIMITED

## Installation place

1. Based on the residential or commercial of EN685 Installation place grading requirement for the product requirements. Combining with the characteristics of our products. suggest:

Residential :below3.0mm

Commercial :above4.0mm、 4.5mm、 5.0mm

2. For residential or commercial ,before felting should be read description of products、 product model 、 packaging batch avoid to appear color difference,same model different batch products ought to felt different space or do interval.

3. Commercial construction area is less than 50 square, strict with ground processing and according to the specified temperature to construct or bridge felting.



# HONGKONG MARIDA INDUSTRY CO., LIMITED

## Common defective phenomenon: floor is out of fairness



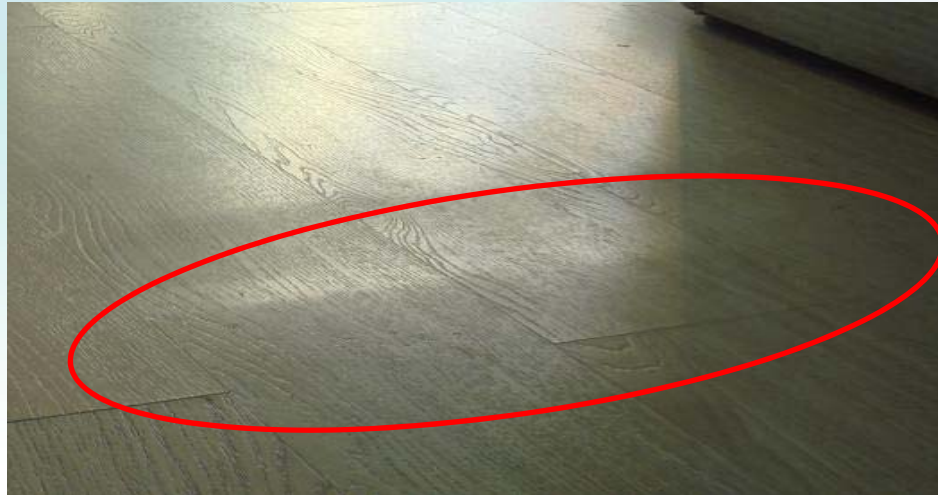
Defective phenomenon : the floors are seriously damaged and cracked, which affects function of use.  
The causing: the basement layer is not enough flat or without level detection or the treatment result doesn't meet the requirement.

Solution: Using leveling instrument to do level detection, Within two meters in diameter, the roughness is less than 2 mm, if it exceeds standards, some relevant treatment need to be done.



# HONGKONG MARIDA INDUSTRY CO., LIMITED

**Common defective phenomenon: floor is out of flatness**



Defective phenomenon: the floors are sunken and curling, affecting their using function and beauty slightly.

The cause: the basement layer is not flat enough or without level detection.

Solution: Using leveling instrument to do level detection, Within two meters in diameter, the roughness is less than 2 mm, if it exceeds standards, some relevant treatment need to be done.

# HONGKONG MARIDA INDUSTRY CO., LIMITED

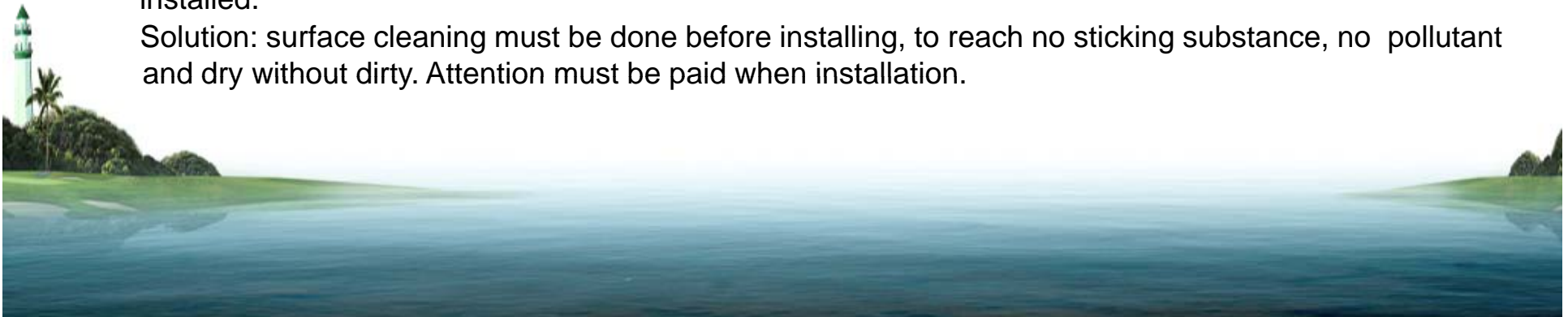
## Common defective phenomenon: the floor is impurity



Defective phenomenon: the long side of the floor is jack-up seriously and edge wrapped, the click type is damaged, which affects function of use.

The causing: the basement layer is impurity, without cleaning before installation or there is impure when installed.

Solution: surface cleaning must be done before installing, to reach no sticking substance, no pollutant and dry without dirty. Attention must be paid when installation.



# HONGKONG MARIDA INDUSTRY CO., LIMITED

## Common defective phenomenon : Pollutants on the floor



Defect phenomenon, the floor topped seriously , affects the beauty .If this appears at the of buckle type position will cause warped edge and destruction of buckle type.

The causing: the based surface is sundry, no clearance before installation or pollutant when installing

Solution: No dung, no pollutants, keep dry, no dust should be ensured before installation and in the process of installation.



# HONGKONG MARIDA INDUSTRY CO., LIMITED

## Common defective phenomenon : Sharp objects on the floor



Defect phenomenon, the floor topped seriously and damaged , affects the function of use and the beauty .If this appears at the of buckle type position will cause warped edge and destruction of buckle type.

The Causing: sharp objet on the based surface , no clearance before installation or pollutant when installing

Solution: No dung, no pollutants, keep dry, no dust should be ensured before installation and in the process of installation



# HONGKONG MARIDA INDUSTRY CO., LIMITED

## Common defective phenomenon : click type damaged



Defect phenomenon : Tenon of the floor short edge become warped edge, affect the function of use and the beauty

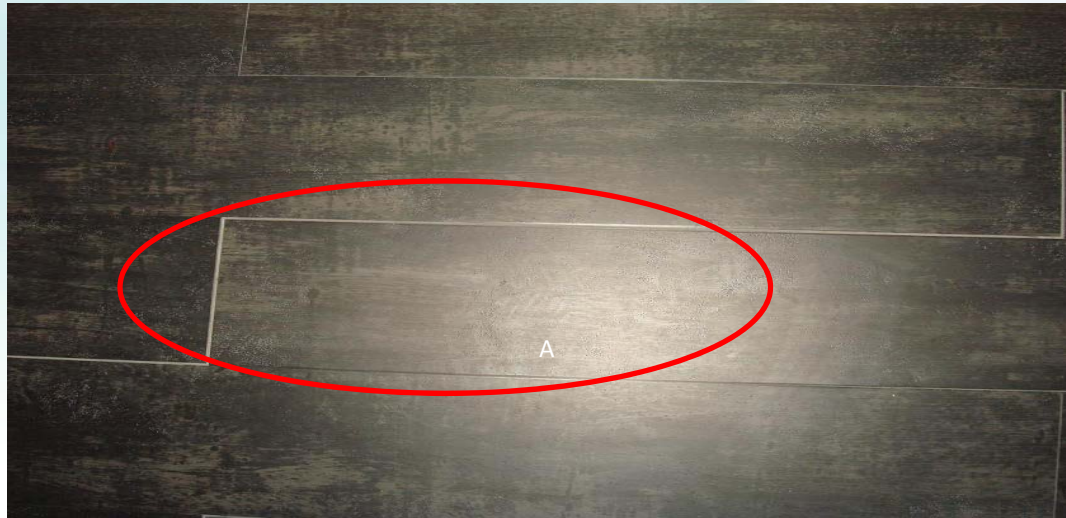
The causing: floor damaged when being carried or the tenon damaged when installed with wrong method

Solution: pay attention to protect when carrying the floors and use the correct way to install



# HONGKONG MARIDA INDUSTRY CO., LIMITED

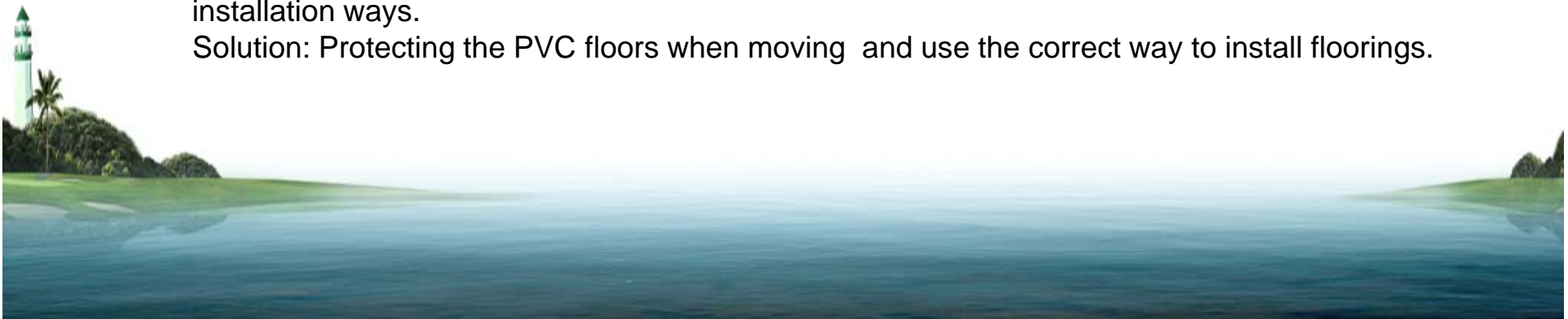
**Common defective phenomenon: Click drop out , can not install well.**



Defective phenomenon: both the short side and long side of the pvc plank drop click which affect the function and beauty of flooring.

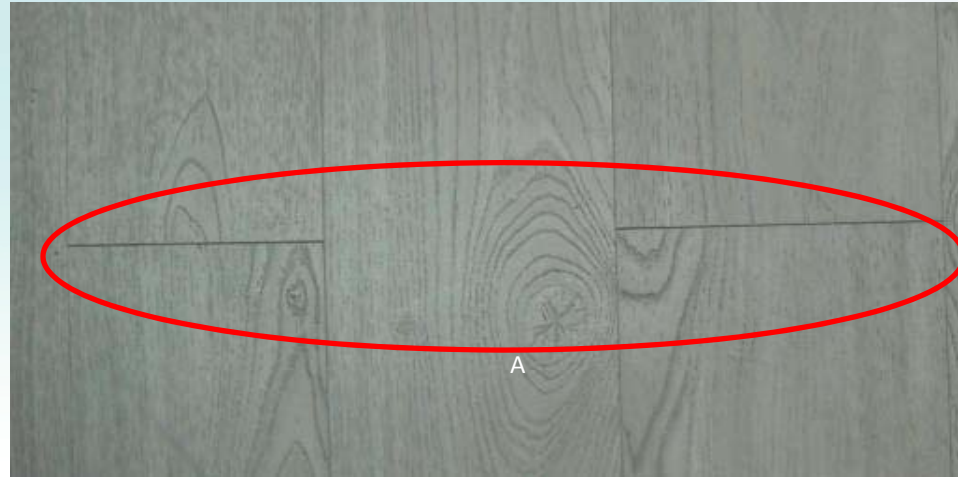
The causing: the tenon of the short side of the plank breaks during moving or using wrong installation ways.

Solution: Protecting the PVC floors when moving and use the correct way to install floorings.



# HONGKONG MARIDA INDUSTRY CO., LIMITED

## Common defective phenomenon: big gap in the short side



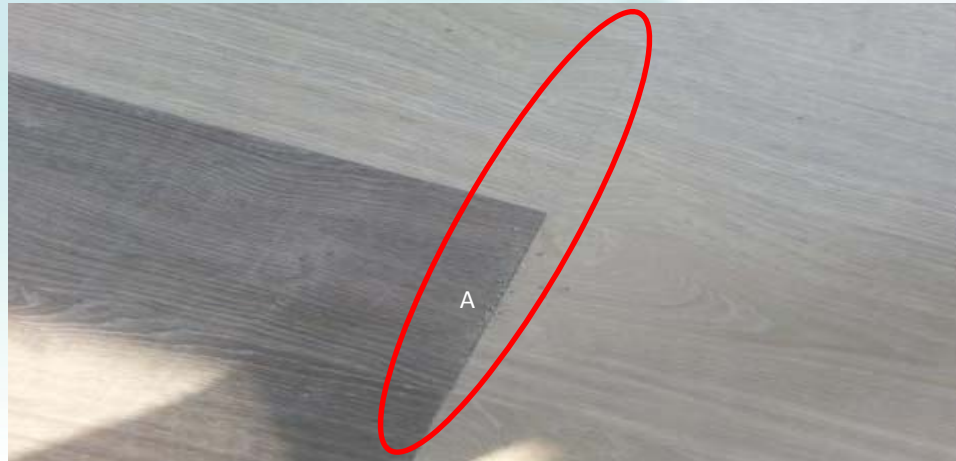
Defective phenomenon: too big gaps will affect beauty of flooring.

The Cause ing: the temperature of the planks do not accordant to the environment or the temperature of installation exceeds as required.

Solution: Choose the correct installation temperature: 20°C to 25°C, and put the planks into the installation room for at least 48 hours before installation.

# HONGKONG MARIDA INDUSTRY CO., LIMITED

## Common defective phenomenon: Appear “one line shape”



**Defective** phenomenon: short side of “One line shape” flooring will appear curling which affects the function and beauty of flooring.

The causing: using wrong installation (one line shape )way

Solution: choose the right way of installation: “a half” or “cutting planks into 3/6/9 pieces equally”





**Thank You !**